

***Never doubt that a small group of thoughtful,
committed citizens can change the world.
Indeed, it is the only thing that ever has.***

Margaret Mead



Flood Protection Alliance

INTERIM PROTECTION FOR THE INNER HARBOR NAVIGATION CANAL

A Presentation to New Orleans Area Elected Officials

August 8, 2007

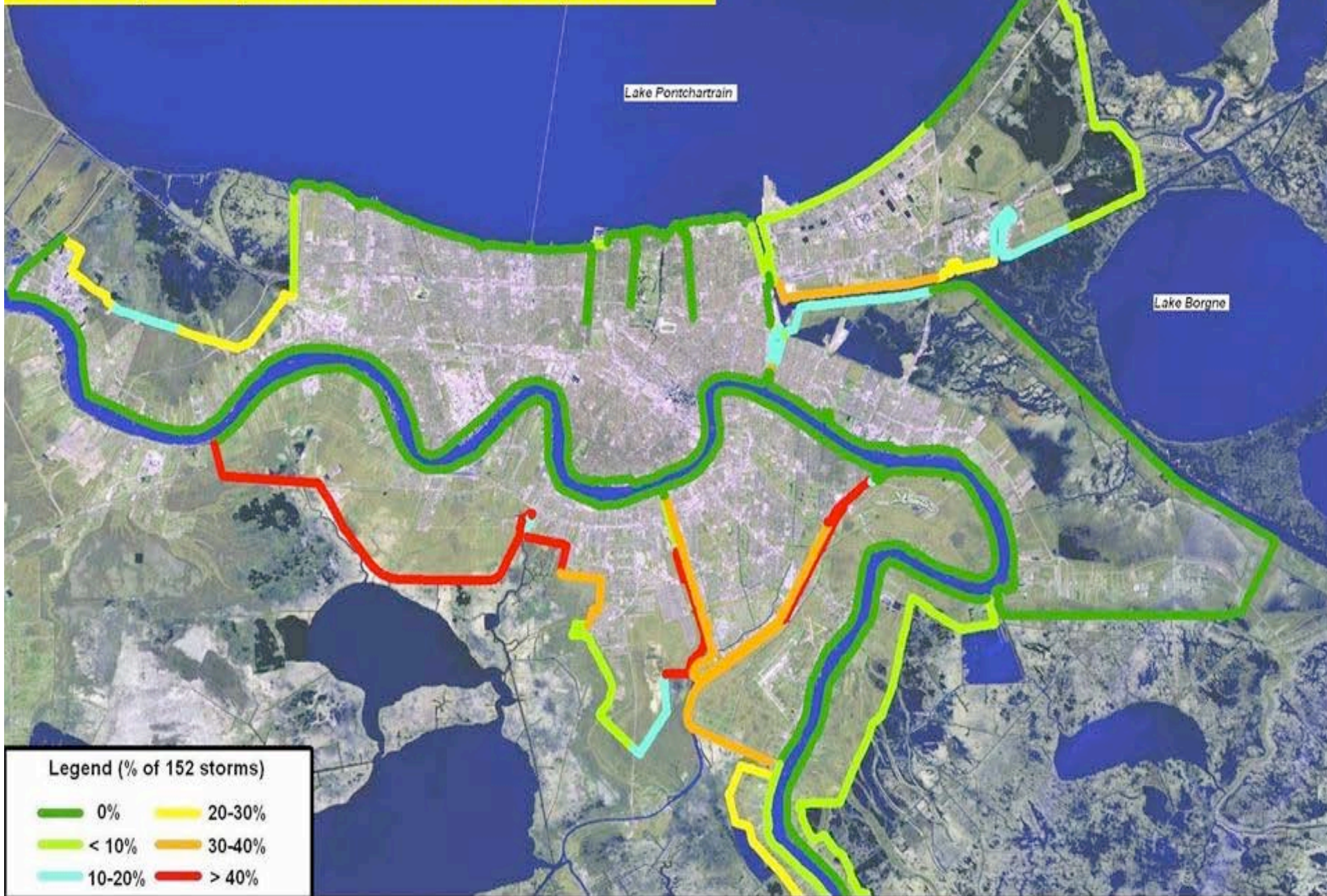


Flood Protection Alliance

Why are we here today?

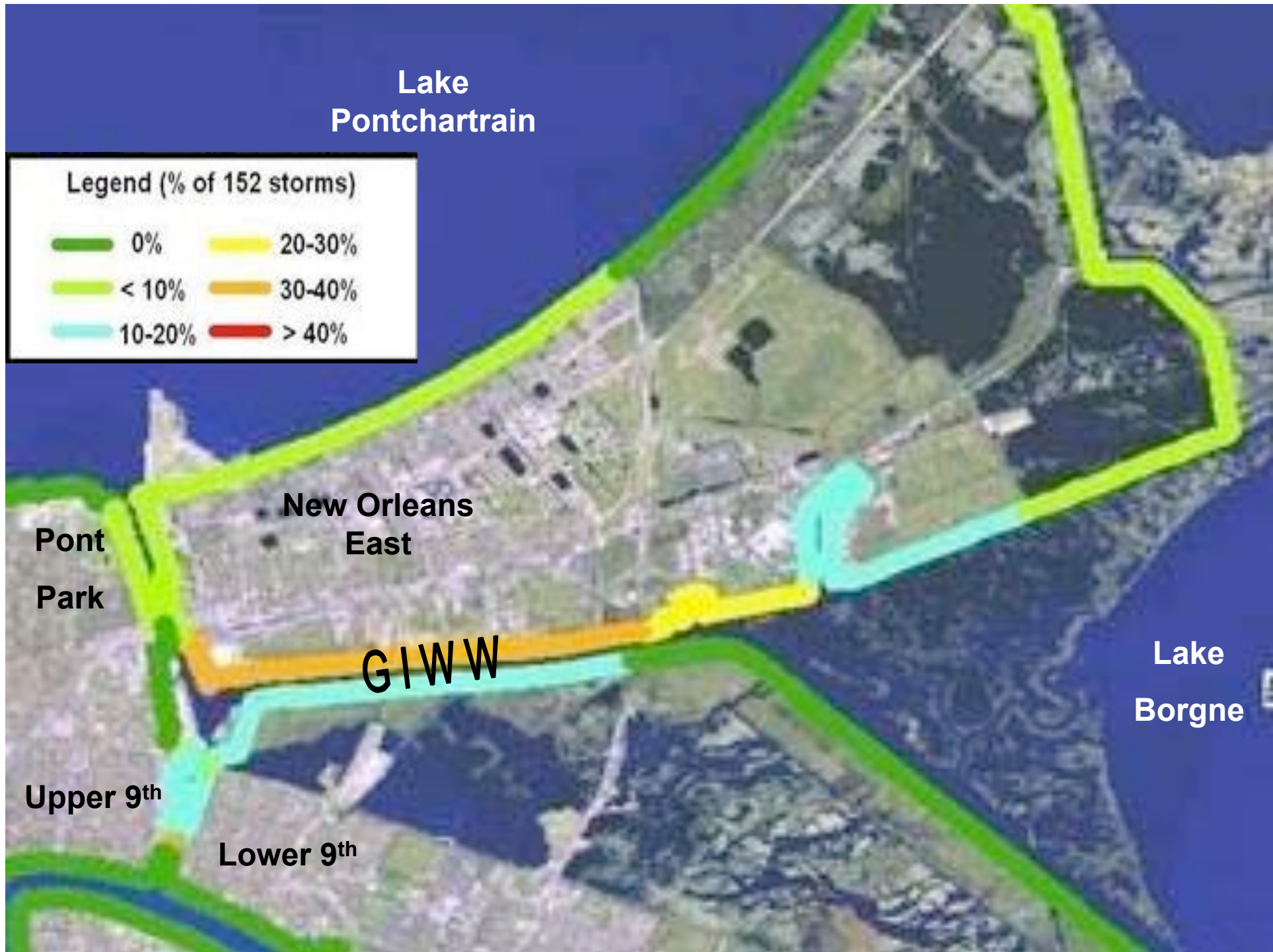
- The Flood Protection Alliance is a group of business, civic, and environmental leaders working on flood protection issues.
- We are concerned about the upcoming decision by the USACE regarding interim flood protection for the IHNC.

Percent of Modeled Storms Producing Overtopping Current (Jun 07) Hurricane Protection System



Lake Pontchartrain

Legend (% of 152 storms)



New Orleans East

Pont Park

GIWW

Lake Borgne

Upper 9th

Lower 9th



“The IHNC is the Achilles heel of the East Bank.”

Col. Jeff Bedey, USACE

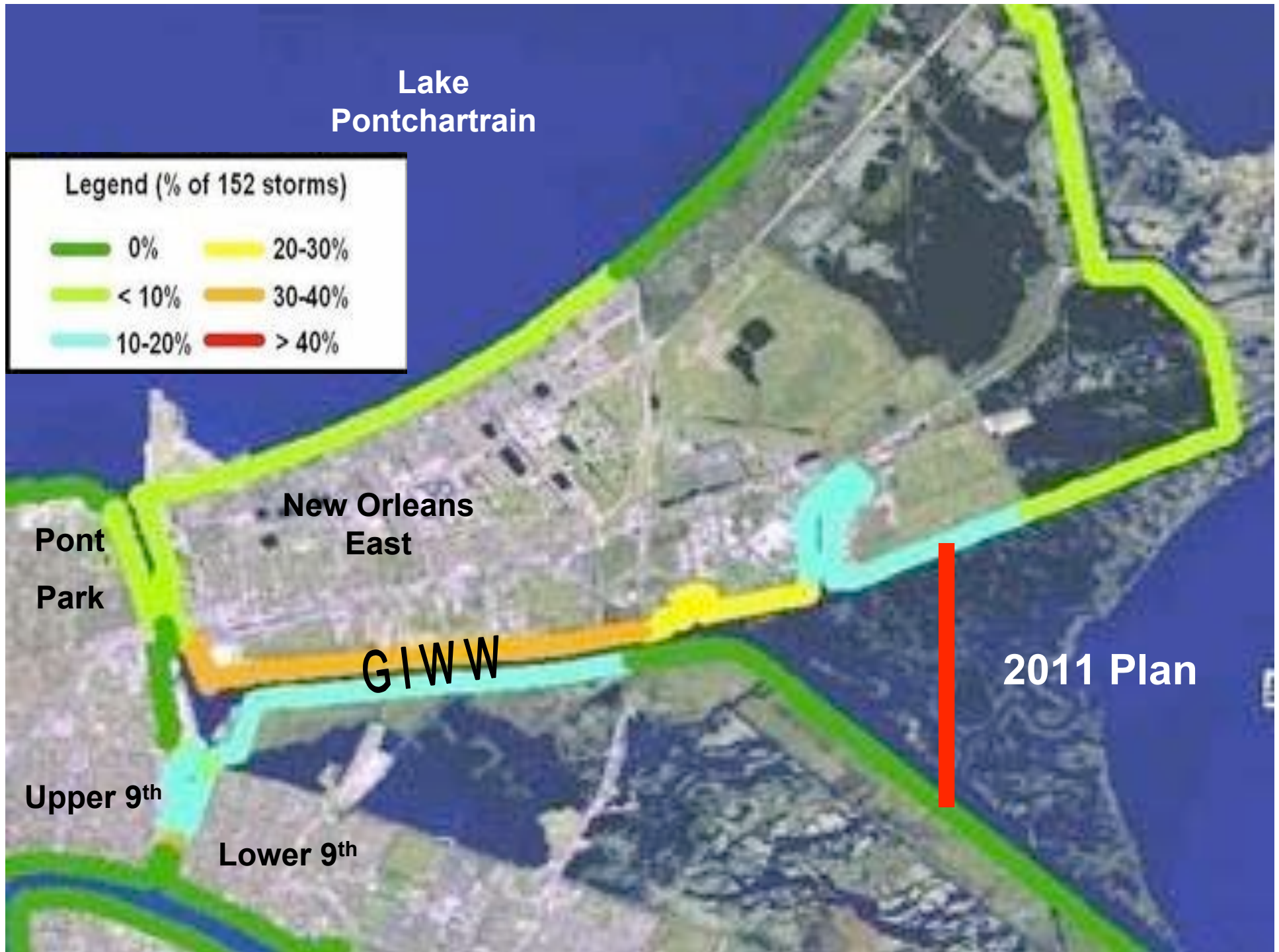
The Three Basins are Exposed to:

Overtopping
and

Catastrophic Failure of I-Walls

Lake Pontchartrain

Legend (% of 152 storms)



New Orleans East

Pont Park

GIWW

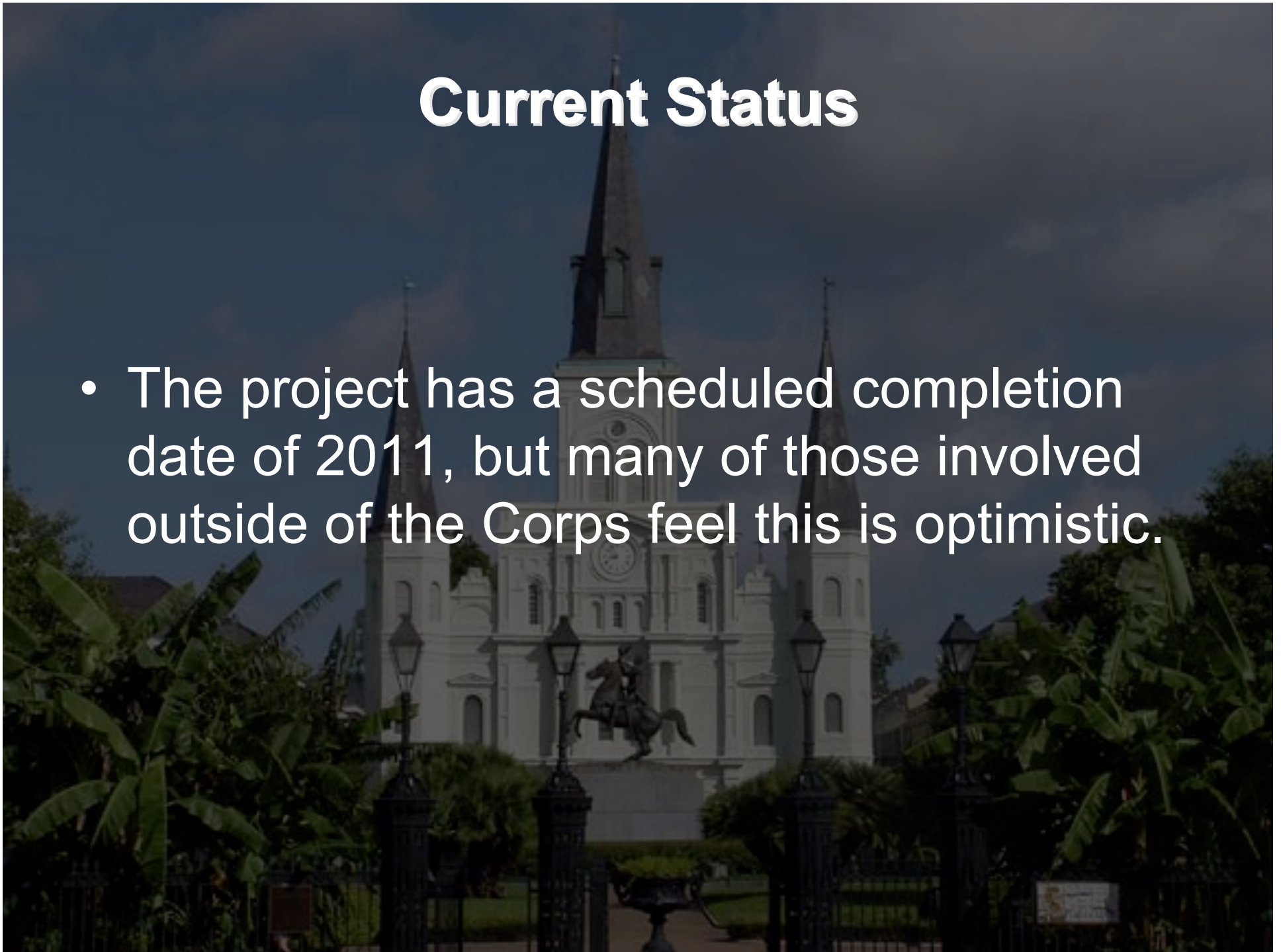
2011 Plan

Upper 9th

Lower 9th

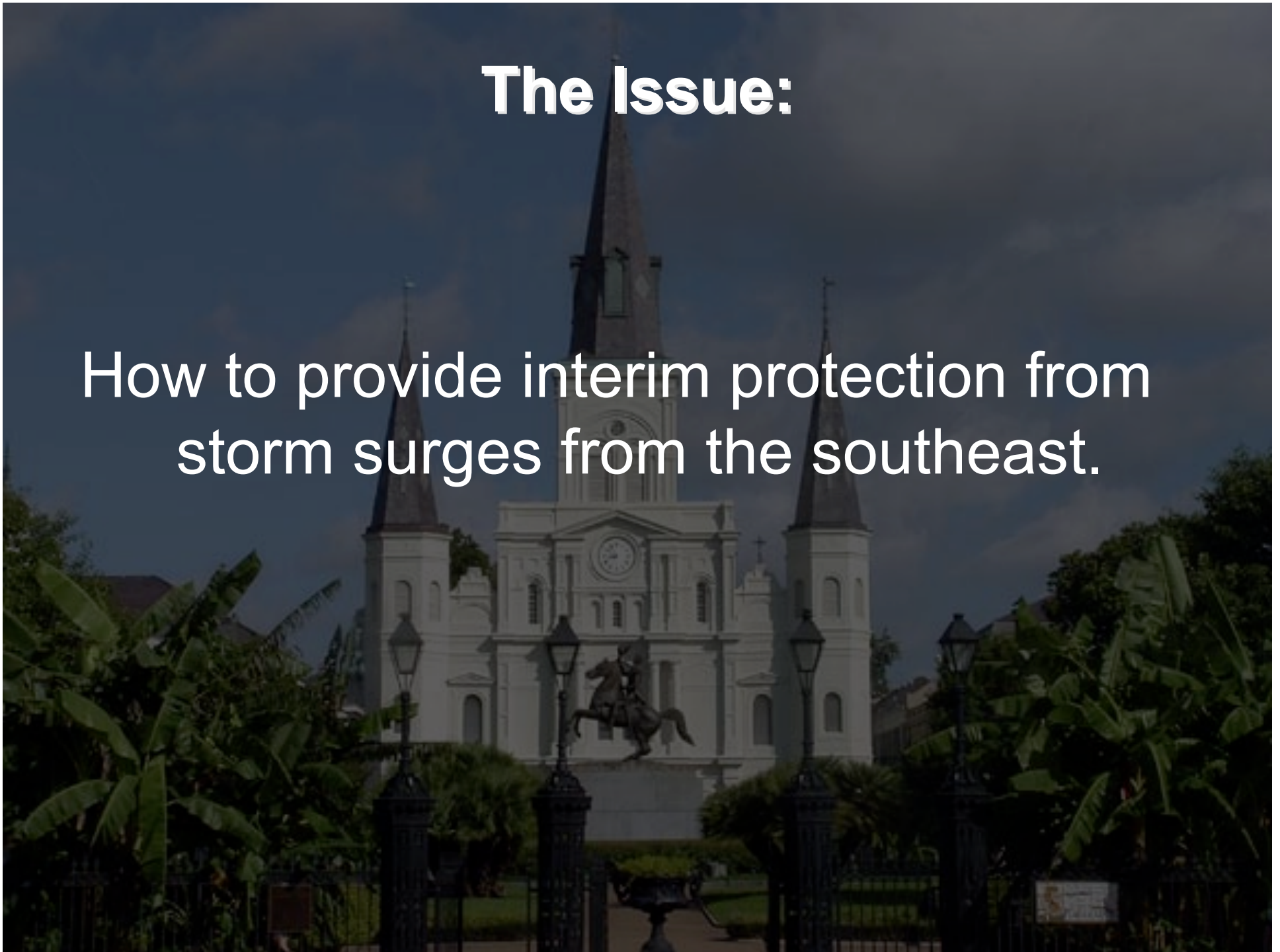
Current Status

- The project has a scheduled completion date of 2011, but many of those involved outside of the Corps feel this is optimistic.



The Issue:

How to provide interim protection from storm surges from the southeast.





Corps is Considering Several Options Including:

The Gate Solution:

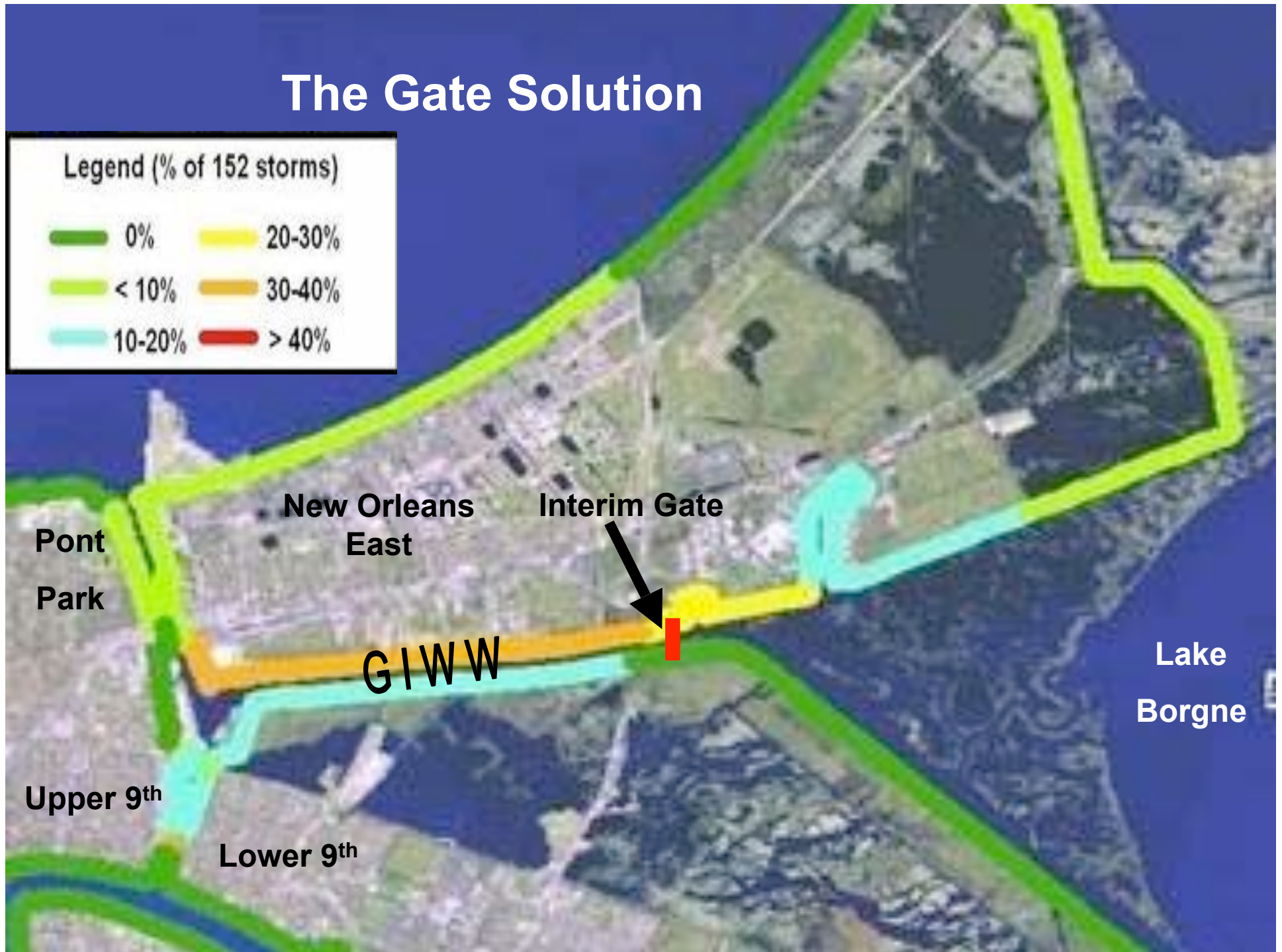
Build a gate on the GIWW

The Steel Plate Solution:

Attach steel plates to raise low sections of IHNC I-walls

The Gate Solution

Legend (% of 152 storms)



GIWW Gate Solution

- Substantially Decreases Overtopping
- Greatly Reduces Chance of Catastrophic Failure
- Provides Robust Protection
- Rough Cost: \$80M to \$100M

The Steel Plate Solution



Steel Plate Solution

The background of the slide is a photograph of the St. Louis Cathedral in New Orleans. The image is darkened with a semi-transparent black overlay to make the white text stand out. The cathedral's three spires and central dome are visible against a dark sky. In the foreground, there are green plants and a black wrought-iron fence.

- Does not prevent overtopping of GIWW
- Increases the risk of I-Wall failure
- Does not provide robust protection
- Rough Cost: \$30M to \$50M

The Steel Plate Solution



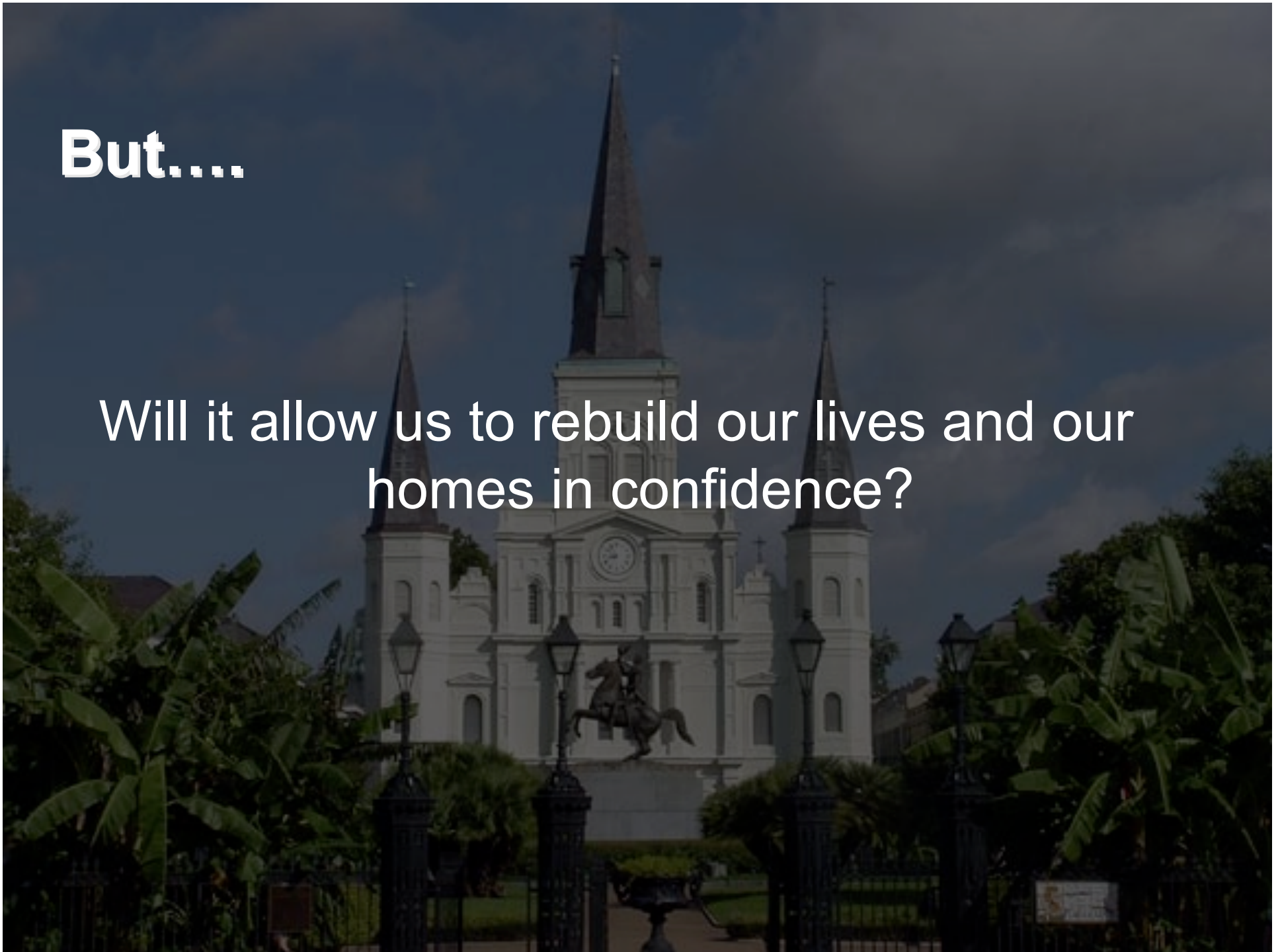
- May be cheaper

and

- It May be Faster

But....

Will it allow us to rebuild our lives and our homes in confidence?



Action Items

- The Corps will be making a decision in the near future.

